

APPLICATION:

PRODUCT NAME: **DrainKing WASTE VALVE  
ROUGH CHROME**

JOB NAME:

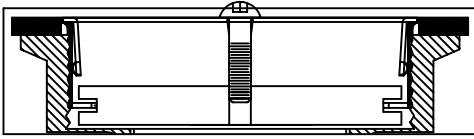
SPECIAL CONFIGURATION  
 CHECK BASE MODEL AND OPTIONS

QUANTITY:

ITEM NO.

MODEL:

29041 w/ VANDAL RESISTANT FLAT STRAINER &  
KNOB OVERFLOW BODY



OPTIONS OR MODIFICATIONS:

- SUPPLY LINES (24" OR 36") CIRCLE LENGTH
- ADD-ON FAUCET (6", 8", 10", 12", 14", 16") CIRCLE
- IN-LINE DUAL CHECK VALVE
- HANDLES (CROSS OR WRIST) CIRCLE STYLE
- VANDAL RESISTANT KIT
- OTHER \_\_\_\_\_

FEATURES:

- \* DUAL TEFLON SEALS
- \* STAINLESS STEEL BALL
- \* CAST RED BRASS BODY, CHROME PLATED
- \* EXTRA STURDY STAINLESS STEEL CLAMPING RING
- \* "CLEAR THROUGH " OPENING - NO NEED TO DISSASSEMBLE IF SNAKING IS REQUIRED
- \* INDUSTRY STANDARD "SEALING" ANGLE - FITS FLUSH TO STANDARD STAINLESS STEEL SINKS
- \* STAINLESS STEEL VANDAL RESISTANT FLAT STRAINER
- \* VANDAL RESISTANT KNOB
- \* END CAP W/ GASKET INSTALLED
- \* 1/4 TURN FULLY OPENS AND CLOSES VALVE
- \* SUPPLIED WITH:
  - ALTERNATE LEVER HANDLE
  - ALTERNATE SLIP JOINT NUT & WASHER

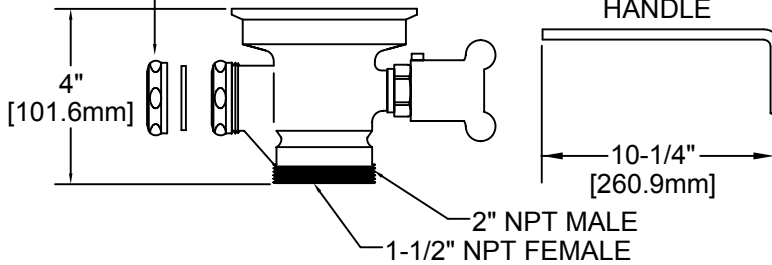
DRAIN RATE:

- \* 12 GPM

SHIPPING WEIGHT

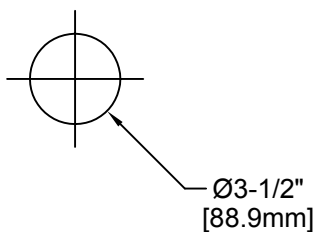
- \* 5.5 LBS

ALTERNATE END CAP  
W/ GASKET



ROUGH-IN:

DRAIN:



ANSI/A112.18.1M

# FISHER

FISHER MANUFACTURING COMPANY  
TOLL FREE: 800-421-6162 - FAX: 800-832-8238  
information@fisher-mfa.com - www.fisher-mfa.com